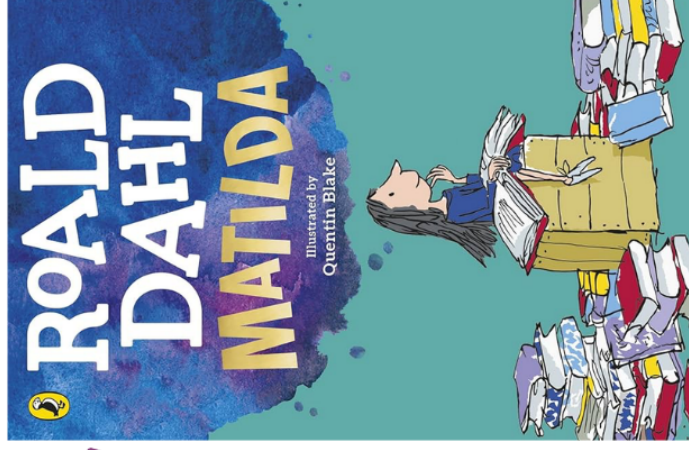


KNOWLEDGE ORGANISER

MARVELLOUS

MATILDA



Vocabulary

- **Chokey:** A tall, narrow cupboard with broken glass and nails in it, used by Miss Trunchbull to punish children.
- **Prodigy:** A young person with exceptional qualities or abilities.
- **Appalled:** Greatly dismayed or horrified.
- **Precocious:** Having developed certain abilities at an earlier age than usual.
- **Delve:** To reach inside or search for something.
- **Doting:** Extravagantly or foolishly loving.
- **Gormless:** Lacking intelligence; stupid.
- **Resent:** To feel bitterness or indignation.
- **Brandish:** To wave or flourish something (especially a weapon) as a threat.
- **Solemn:** Formal and dignified; serious.
- **Impertinent:** Not showing proper respect; rude.
- **Ethereal:** Extremely delicate and light.

What the book is about...

Matilda Wormwood is no ordinary girl —she is incredibly clever and loves reading, even though her parents don't understand her at all.

When she starts school, she meets the kind Miss Honey and the terrifying Miss Trunchbull, who rules the school with cruelty. But Matilda soon discovers she has a very unusual power...

Can Matilda use her intelligence and special ability to stand up for what is right and change her life forever?

Key Characters

Matilda - A very clever and kind girl who loves reading and has special powers.

Miss Honey - her teacher who supports Matilda's intelligence.

Miss Trunchbull - he cruel and scary headmistress who enjoys punishing children.

Mr and Mrs Wormwood - Matilda's cruel parents

Lavender - Matilda's friend at school

Mrs Phelps - the librarian who supports Matilda's love for reading

Who is the author?

Roald Dahl, was a well-known British writer who created exciting and imaginative stories for children. His books often include brave young characters, humour, and a battle between kindness and cruelty.